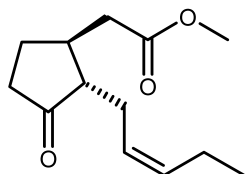


Floral

Jasmin

SPLENDIONE®

(ex Methyl Jasmonate)

952890


Cyclopentaneacetic acid,
3-oxo-2-(2-pentenyl)-, methyl ester

REFERENCES

CAS number: **0039924-52-2**

FEMA number: **3410**

REACH number: –

Stabilizer: **0.1% of Tocopherol Alpha (E307),
0.004% of Citric Acid (E330)**

Solvent: **None added**

Firmenich code: **952890**

Tenacity

Lasts 1 week
on a smelling strip.



1 month

3 weeks

2 weeks

1 week

4 days

3 days

2 days

1 day

6 hours

3 hours

2 hours

1 hour

OLFACTIVE NOTE

Odor reminiscent of the floral heart of jasmin. Petal soft and unctuous. Very elegant and natural.

PERFUMERY USAGE

SPLENDIONE® gives rich long lasting, substantive floral effects in all perfumes at very low dosages. It works particularly well in white florals like jasmine and lily of the valley. It can enhance aldehydic florals and chypre fragrances.

PHYSICO-CHEMICAL PROPERTIES

appearance	Colourless to very pale yellow liquid
flashpoint	>100°C
vapour pressure	0.02 Pa at 20°C
purity	min 98%
log p (measured)	2.33
molecular weight	224

STABILITY & PERFORMANCE

RECOMMENDED APPLICATIONS	STABILITY	TYPICAL % USE	SUBSTANTIVITY & REMARKS	
fine fragrances	■■■■■	0.5 - & up	Top and heart note	
shampoo	■■■■	0.5 - 1%	wet: ■■■■	dry: ■■■■
shower gel	■■■■	0.5 - 1%	bloom: ■■■■	
soap	■■■■	0.5 - 1%	foam: ■■■■	dry hand: ■■■■
detergent	■■■■■	0.5 - 1%	wet: ■■■■	dry: ■■■■
softener	■■■■■	0.5 - 1%	wet: ■■■■	dry: ■■■■
APC	■■■■	0.5 - 1%	–	
candle	■■■■	0.5 - 1%	cold wax: ■■■■	burning: ■■■■